

NATASHA SADIER

PERFORMANCE DESIGN



ABSOLUTE SCENES

COSTUME DESIGNER
@ THE MARBLE FACTORY
IN COLLABORATION WITH SLEEPDOGS
(WRITTEN BY TIM XATAACK, DIRECTED BY TANUJA AMARASURIYA)
SET DESIGN BY CHARLY HURRELL
AV DESIGN BY CHOY-PING CLARKE-NG
PHOTOS BY MARK DAWSON





JAMANDA



KULTUR



BEAR +
ICE CREAM



OFFICER



OTTO IN THE LIDO

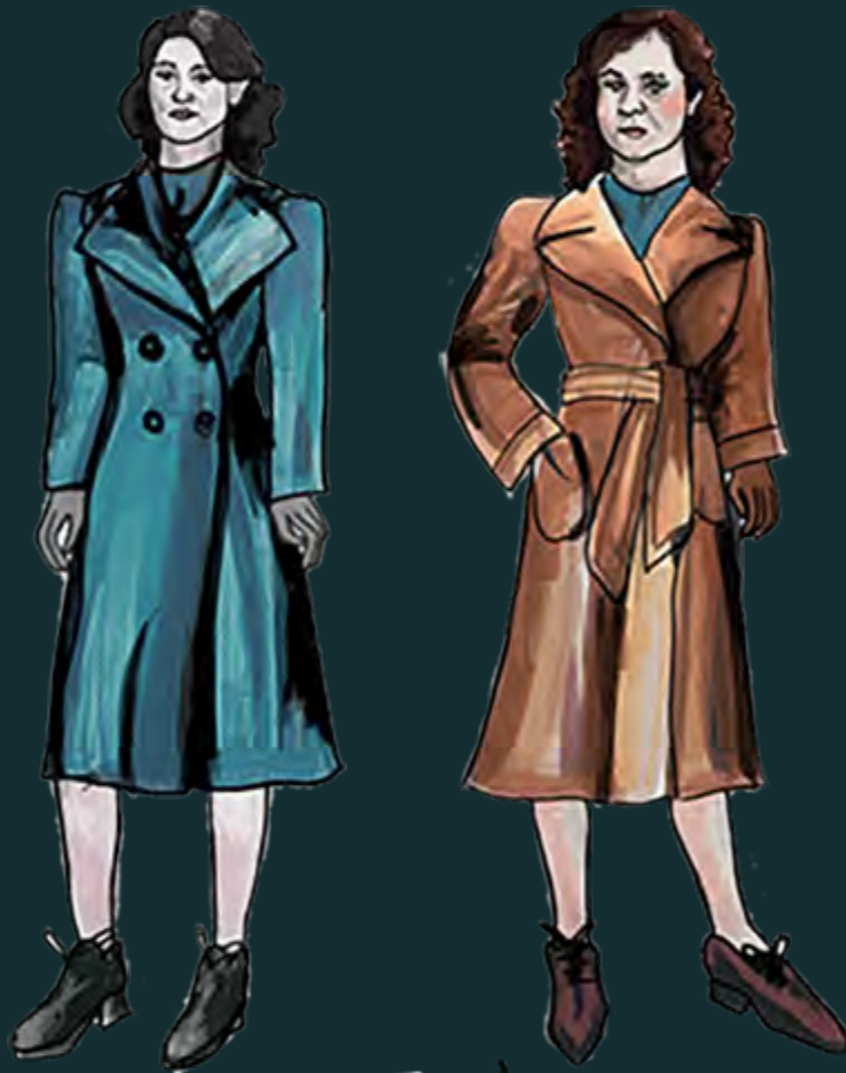
SET + COSTUME DESIGNER
A THEORETICAL PROJECT SET @ CLIFTON LIDO
WRITTEN BY ISEULT DEANE



SOPHIA + AMELIA



ACT 1
1905



ACT 2
1946



ACT 3
1996

PUPPETEERS SWIRL MATERIAL USING STICKS TO CREATE THE ILLUSION OF A WHALE UNDER THE WATER



A SERIES OF WATER FOUNTAINS SET OF AT INTERVALS TO MIMIC A WHALE'S SPOUT



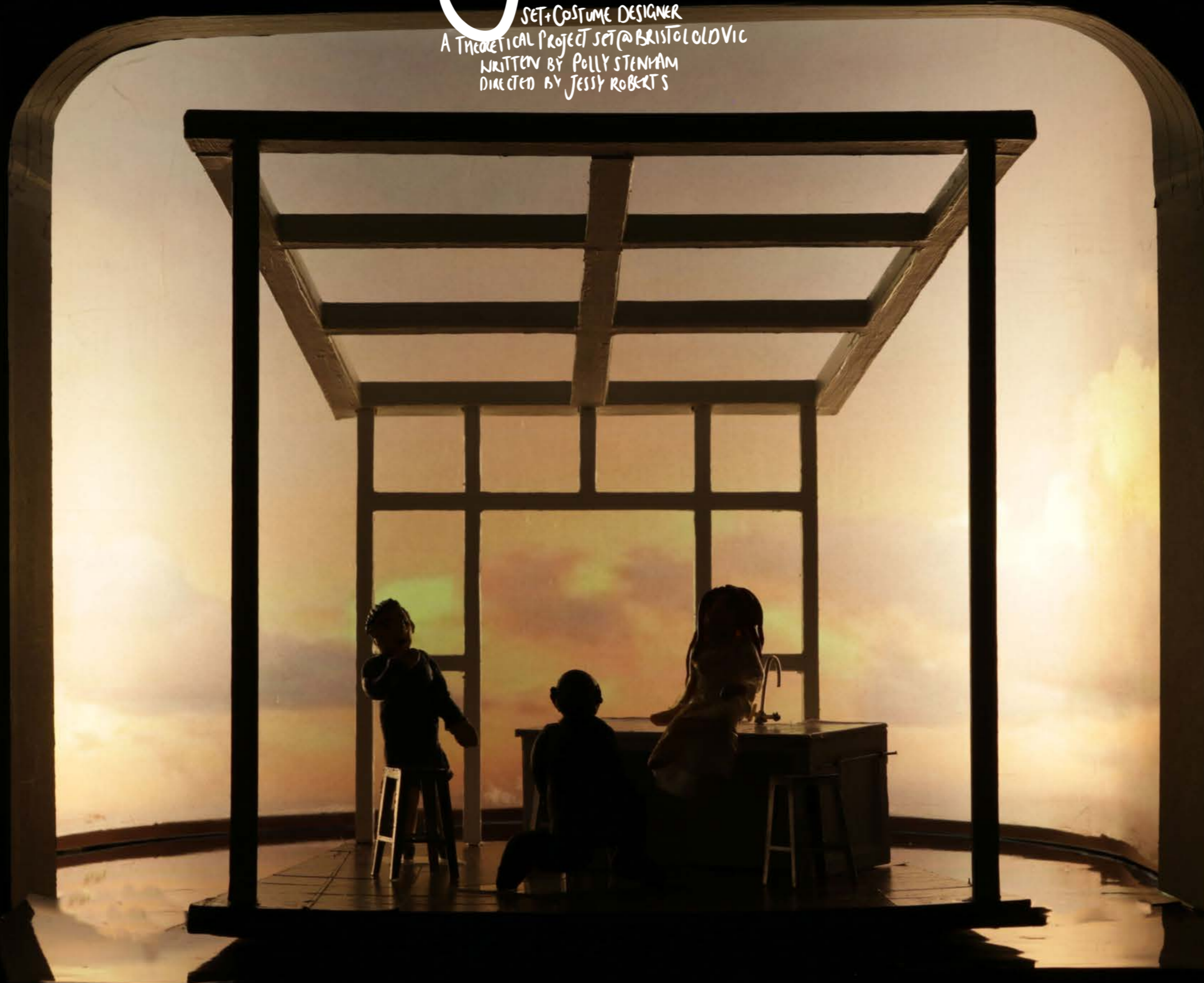
OTTO IS REVEALED AS A LANTERN PUPPET



OTTO THE WHALE

JULIE

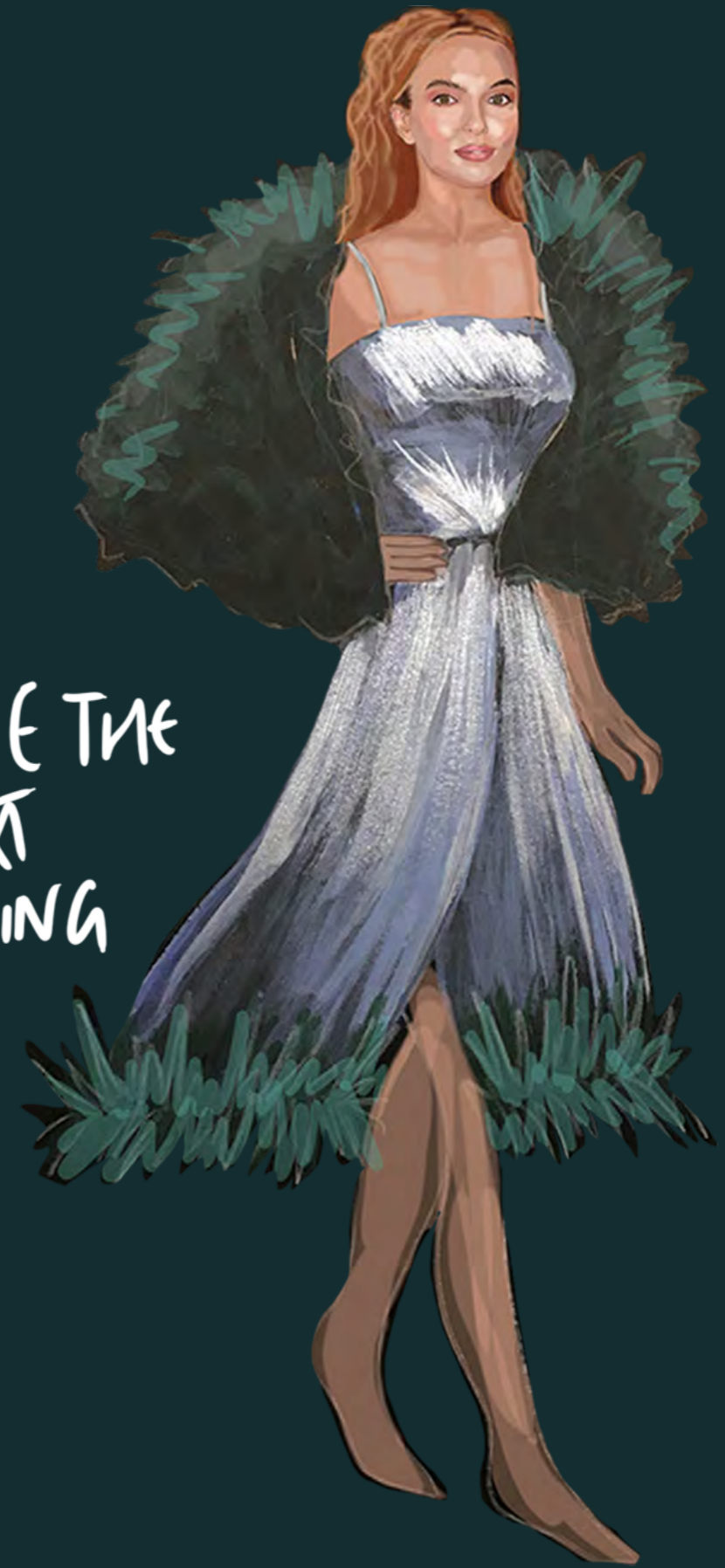
SET+ COSTUME DESIGNER
A THEORETICAL PROJECT SET @ BRISTOL OLD VIC
WRITTEN BY POLLY STENHAM
DIRECTED BY JESSY ROBERTS





JULIE
@PARTY

JULIE THE
NEXT
MORNING





LEND ME HOME

SET + PUPPET DESIGNER + MAKER
STOP MOTION ANIMATOR
MADE AS PART OF THE ALGORITHM FESTIVAL
DIRECTED BY HOPE THAIN



TOY PLASTIC CHICKEN

SET + COSTUME DESIGNER
@ THE WARDROBE THEATRE
WRITTEN BY UMA NADA-RAJAN
DIRECTED BY WILLIAM BYAM-SHAW
PHOTOS BY CRAIG FULLER





THE BOOK CLUB

COSTUME DESIGNER
FILM MADE BY BOVIS
WRITTEN BY MADDIE BEAUTYMAN
DIRECTED BY VINCE PELLEGRINO



JAMES



BILLY



OWAIS



RACHEL



AYESHA



NATASHA